



20 Gillingham Street,  
London SW1V

GARTON JONES.COM



20 Gillingham Street,  
London, SW1V

GARTON JONES.COM

8 Gatliff Road  
Grosvenor  
Waterside  
Chelsea  
London  
SW1W 8DP

Sales +44 (0) 20 7730 5007  
gws@gartonjones.com  
www.gartonjones.com

## £530,000 Leasehold

A bright ONE BEDROOM apartment of approx. 470 sq.ft (43.7 sq.m) for sale in a residential development located within a few minutes' walk of Victoria Station. The apartment has an open plan reception room and kitchen with integrated appliances and a modern bathroom. There is wood flooring, air conditioning, underfloor heating and Entryphone system. There is a secure underground parking space. Residents have the use of the daytime porter service. There is a large Sainsbury's and local amenities close by including Victoria station with link to the Gatwick Express within just a few minutes walking distance.

Available via our office is on Grosvenor Waterside (underneath Bramah House) just a short walk from the property.

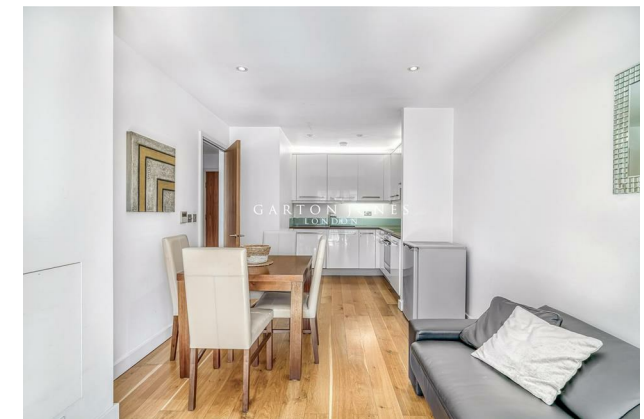
Service Charges approx. £6,133.12 per annum  
Ground rent approx. £250.00 per annum  
Lease: 999 years from September 2007

Council Tax: Westminster Council (band E)

EPC Rating: B (81)

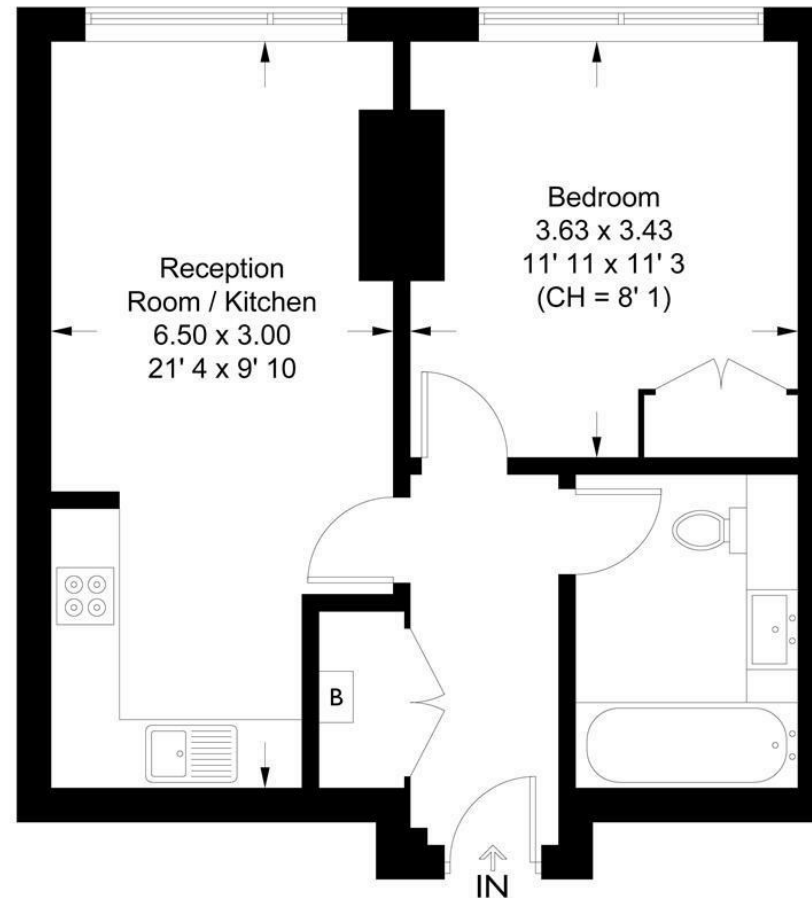
EPC certificate available on request.

- 470 Sq.ft (43.7 Sq.m)
- Open Plan Reception Room
- Kitchen With Integrated Appliances
- 1 Double Bedroom
- Entryphone System
- Secure Underground Parking
- Daytime Porter
- Underfloor Heating & Air Conditioning
- Large Sainsbury's Close By
- Close To Victoria Train Station



**Gillingham Street**

Approximate Gross Internal Area = 470 sq ft / 43.7 sq m

GARTON JONES  
LONDON

This plan is not to scale and must be used as layout guidance only. All measurements and areas are approximate and should not be relied upon to provide accurate information. This plan must not be relied upon when making property valuations, design considerations or any other such relevant decisions. We accept no responsibility or liability (whether in contract, tort or otherwise) in relation to any loss whatsoever arising from or in connection with any use of this plan or the adequacy, accuracy or completeness of it or any information within it.





